

ListenField Predictive Analytics for Farming



rassarin@listenfield.com

For Japan/Thailand Intergovernmental Meeting (Workshop)
February 2022

Agenda

- ListenField Introduction
- ListenField Solution

Appendix

- Technology behind Products

Founder Team and Story



**Rassarin
Chinnachodteeranun PhD**

CEO



**Kiyoshi
Honda PhD**

CSO

2017

In 2017, they co-founded ListenField, to take their work outside of the academic field, and broaden their impact.

2019

Two years later, ListenField received the UNDP Low Carbon Award, proving the environmental benefits of machine vision applied for the purpose of precision agriculture. This year, ListenField also received investment.

2020

In 2020 its API became part of the Japanese Government's "agricultural reform policy".

2021

In 2021, ListenField received investment from **Kubota** to expand the impact of their work to more farmers, communities and corporations.

Today, ListenField is a growing and multicultural team of 20 people, with operations in 6 countries with over 10 corporate clients, and more than 20,000 farmers using the technology.

Bridge between Japan and Thailand

In Thailand:

We experience with sugarcane, rice, sweetcorn, cassava, potato

In Japan:

We experience with rice, potato, soybean, wheat, sugarbeet



monitoring

Crop Health

作物の健康状態のモニタリング

analyzing

Growth rate

生長率の分析

predicting

Yield & Harvesting time

収穫量と収穫期の予測

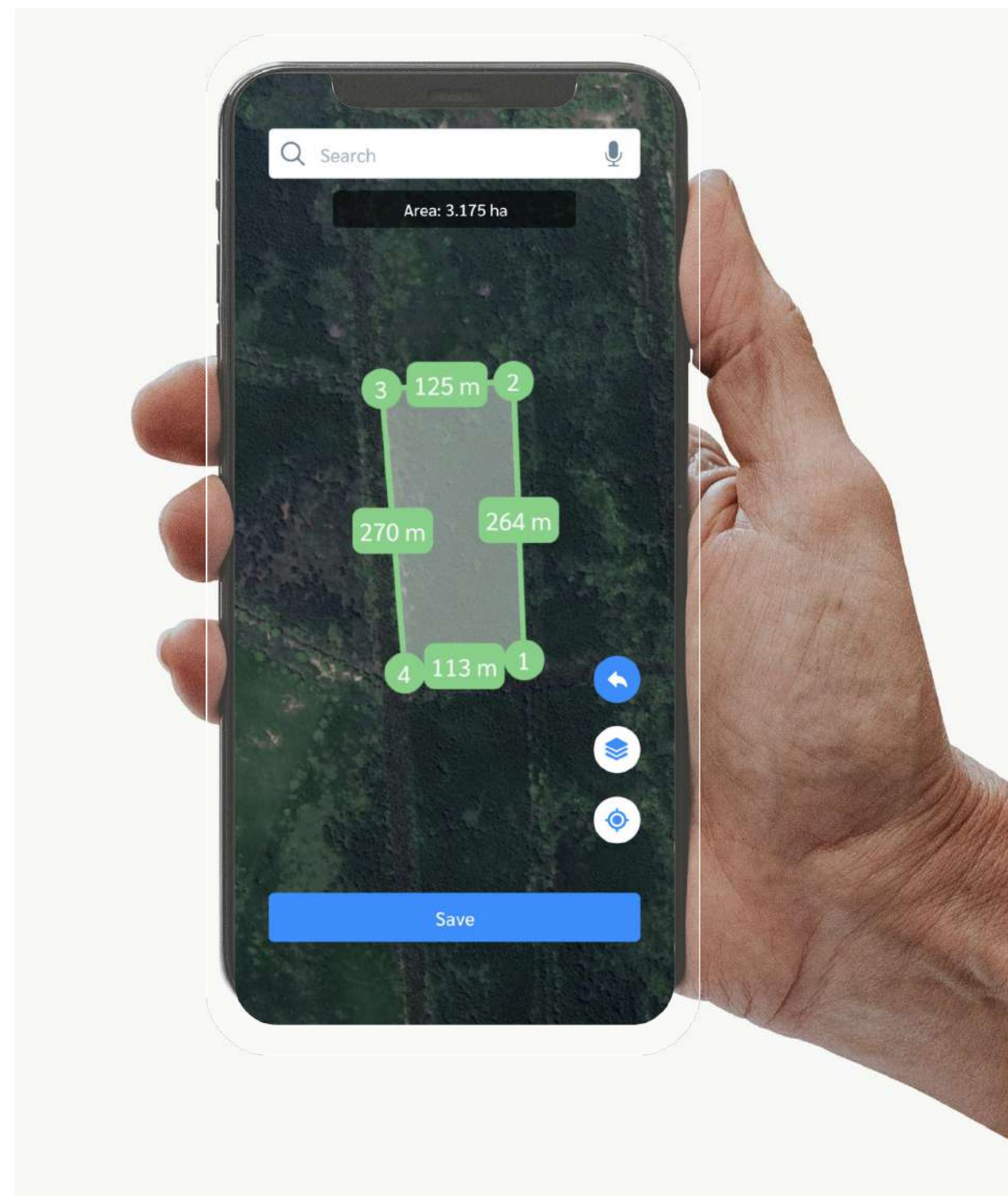


FarmAI Mobile & Dashboard

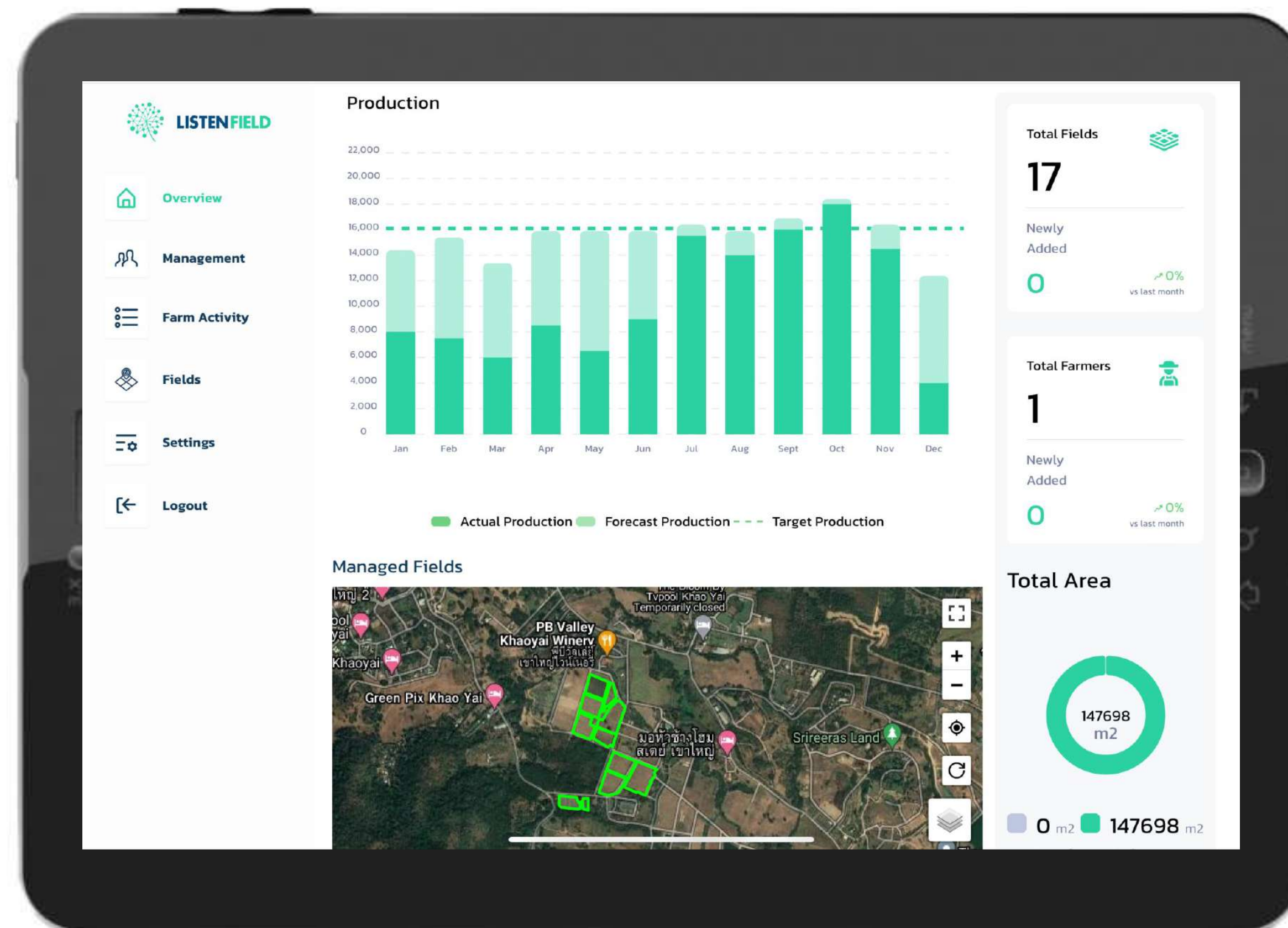


FarmAI is an interconnected digital solution that provide dashboard and mobile application to **collect, analyze, and visualize data yield and crop growth**

Farmer logs data on FarmAI mobile app



Analysis & historicals are displayed on dashboard



FarmAI: Manage your fields on map

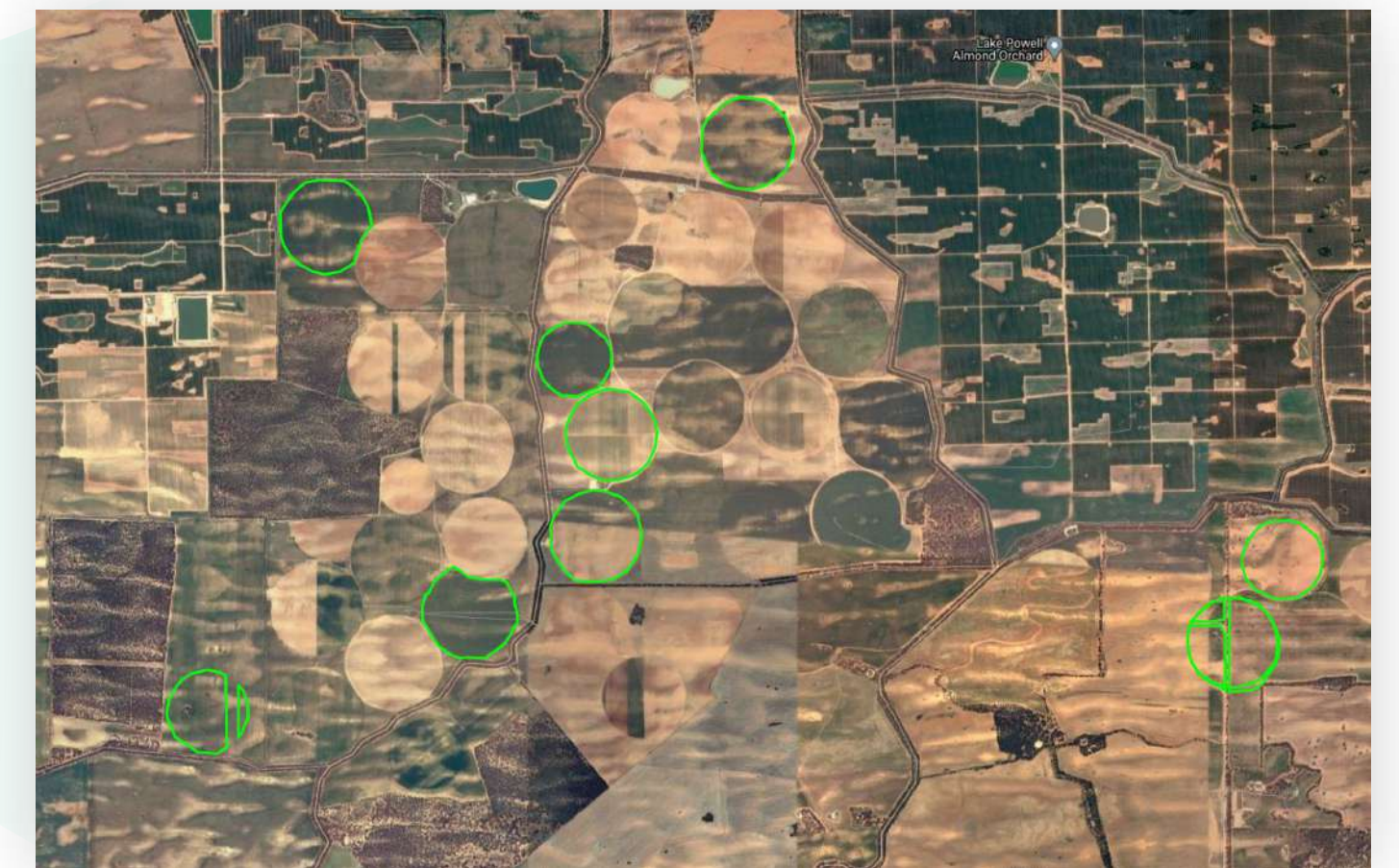
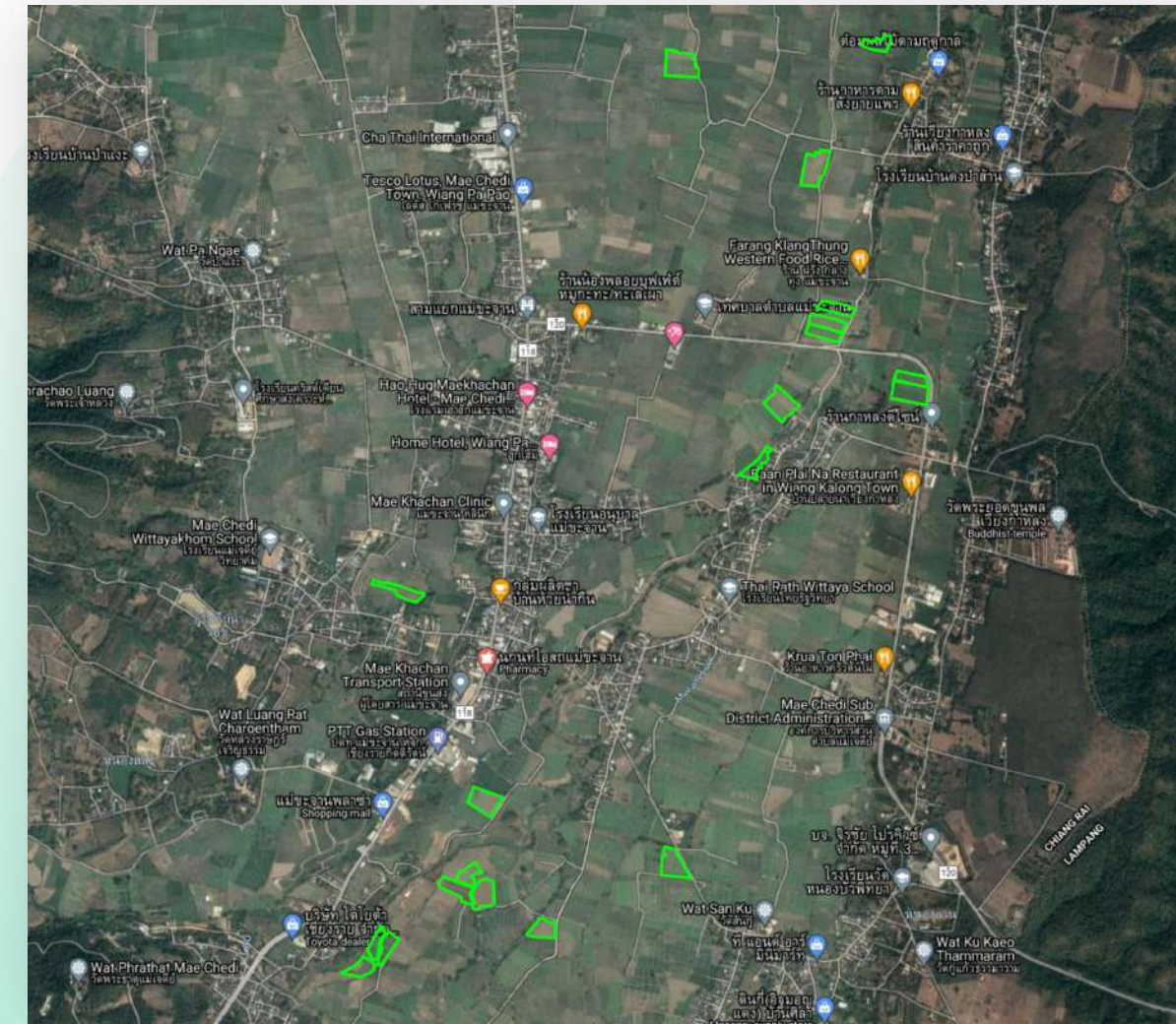


Field List

Search field/crop...

8.456 ha
46.896 ha
9.887 ha
10.126 ha
73.622 ha
70.298 ha
5.590 ha
43.917 ha
21.682 ha
4.178 ha
11.671 ha
12.714 ha

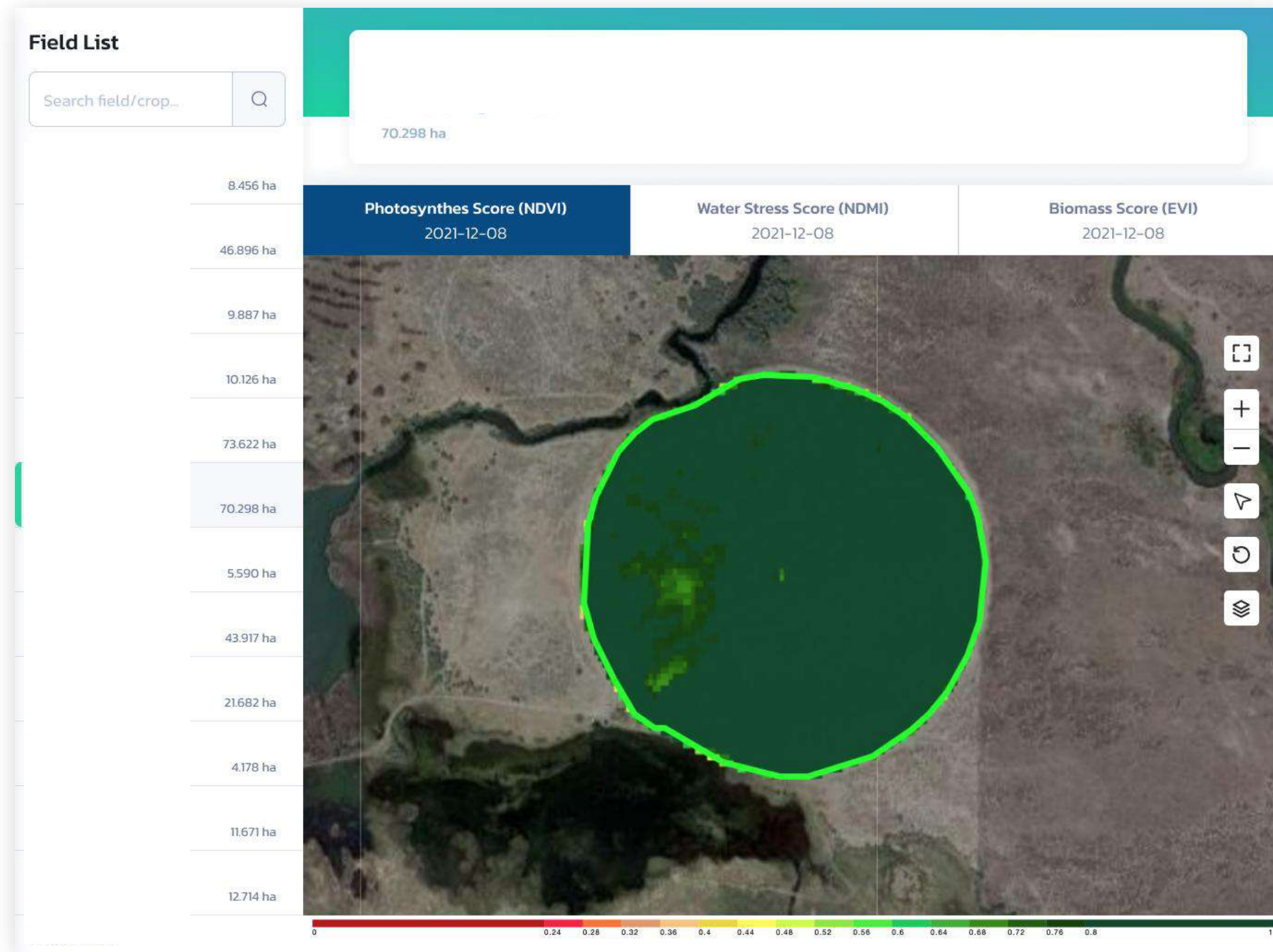
119 Fields

A world map showing the global distribution of fields. Two specific regions are highlighted with green boxes: one in Southeast Asia and another in Australia. To the right of the map is a vertical toolbar with icons for map navigation: a square with a plus sign (zoom in), a square with a minus sign (zoom out), a square with a compass (direction), a square with a circular arrow (refresh), and a square with a list icon (layers).

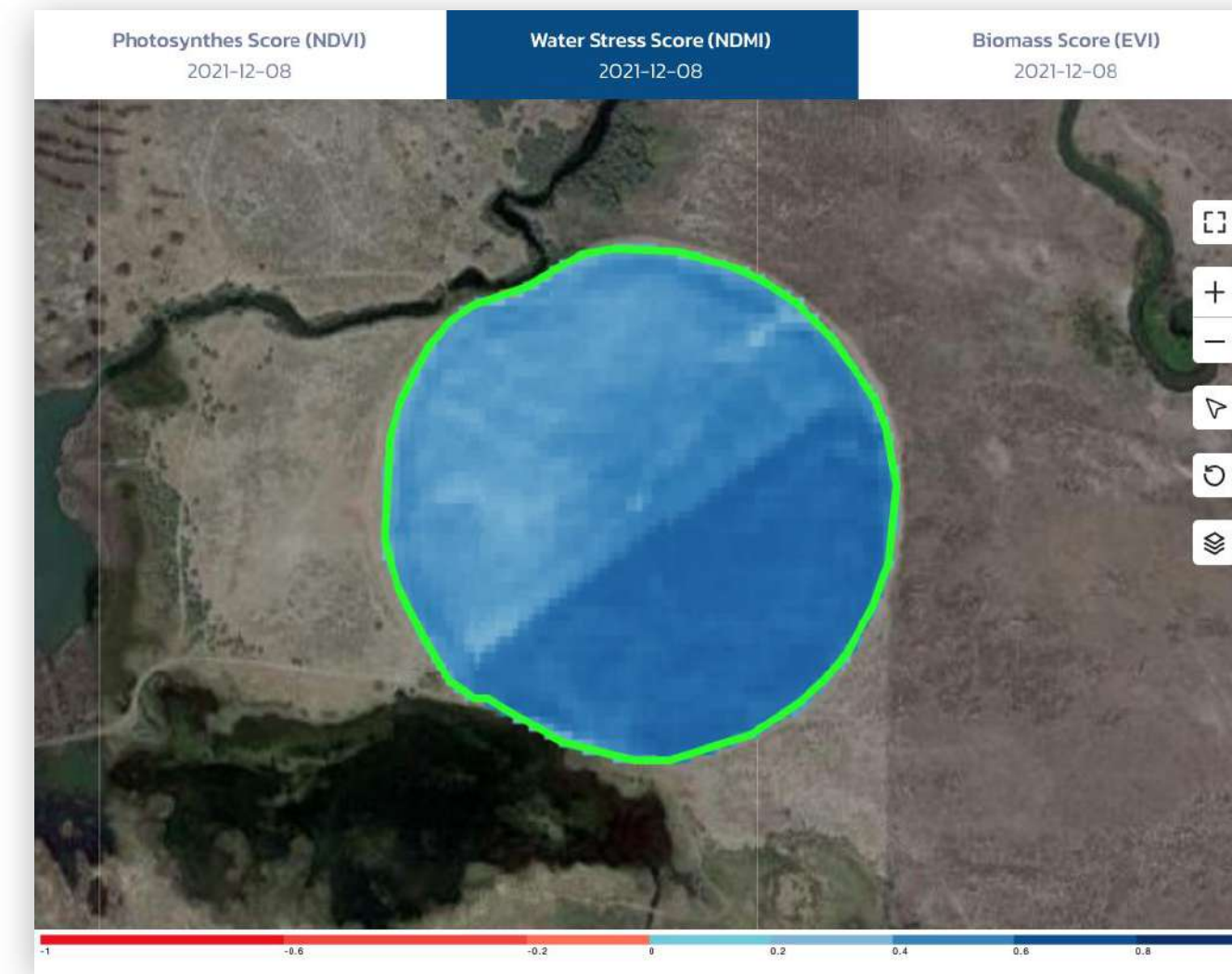
Overview of all your fields

FarmAI: Crop Health Map

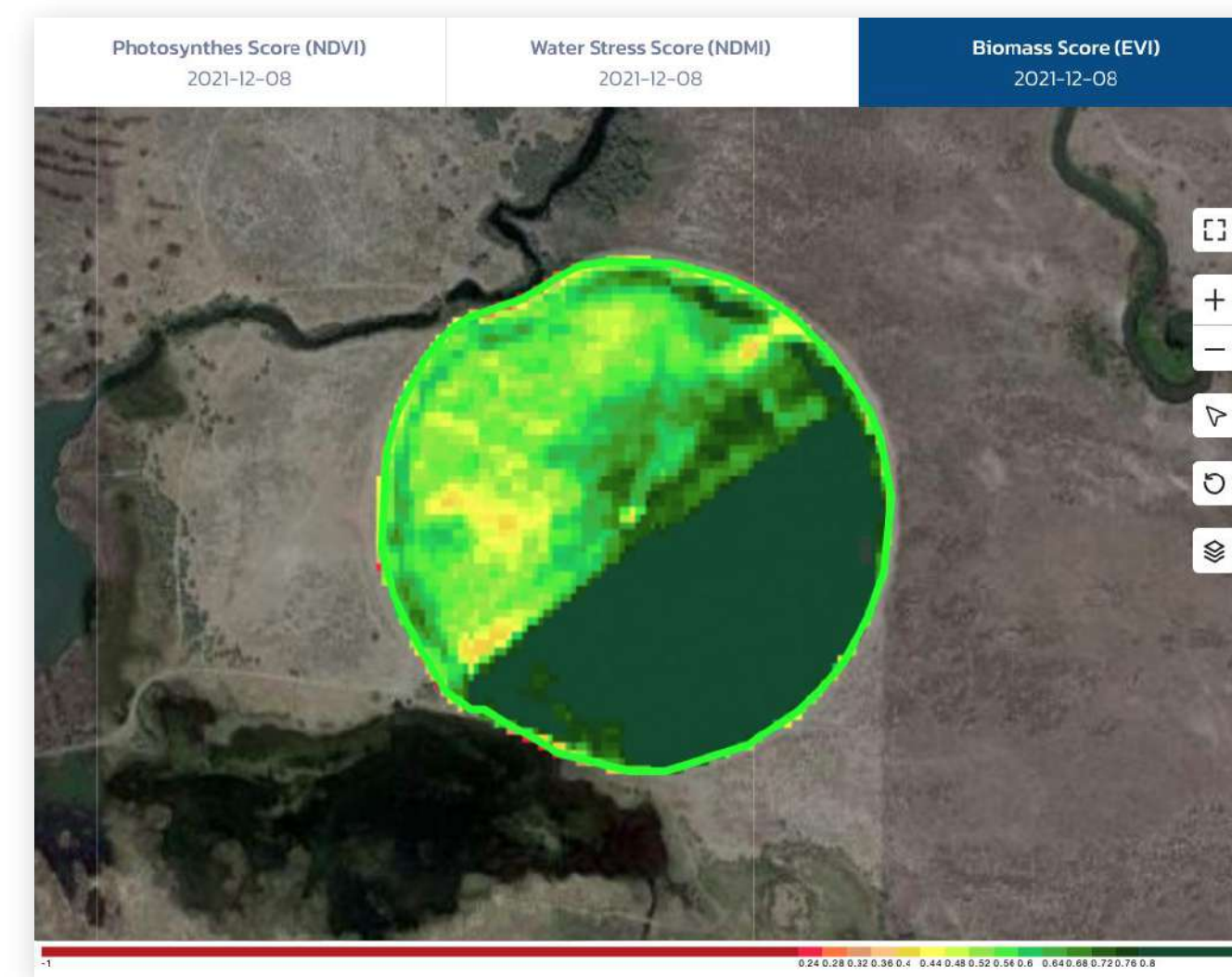
Crop health analysis of each field



Photosynthesis Score

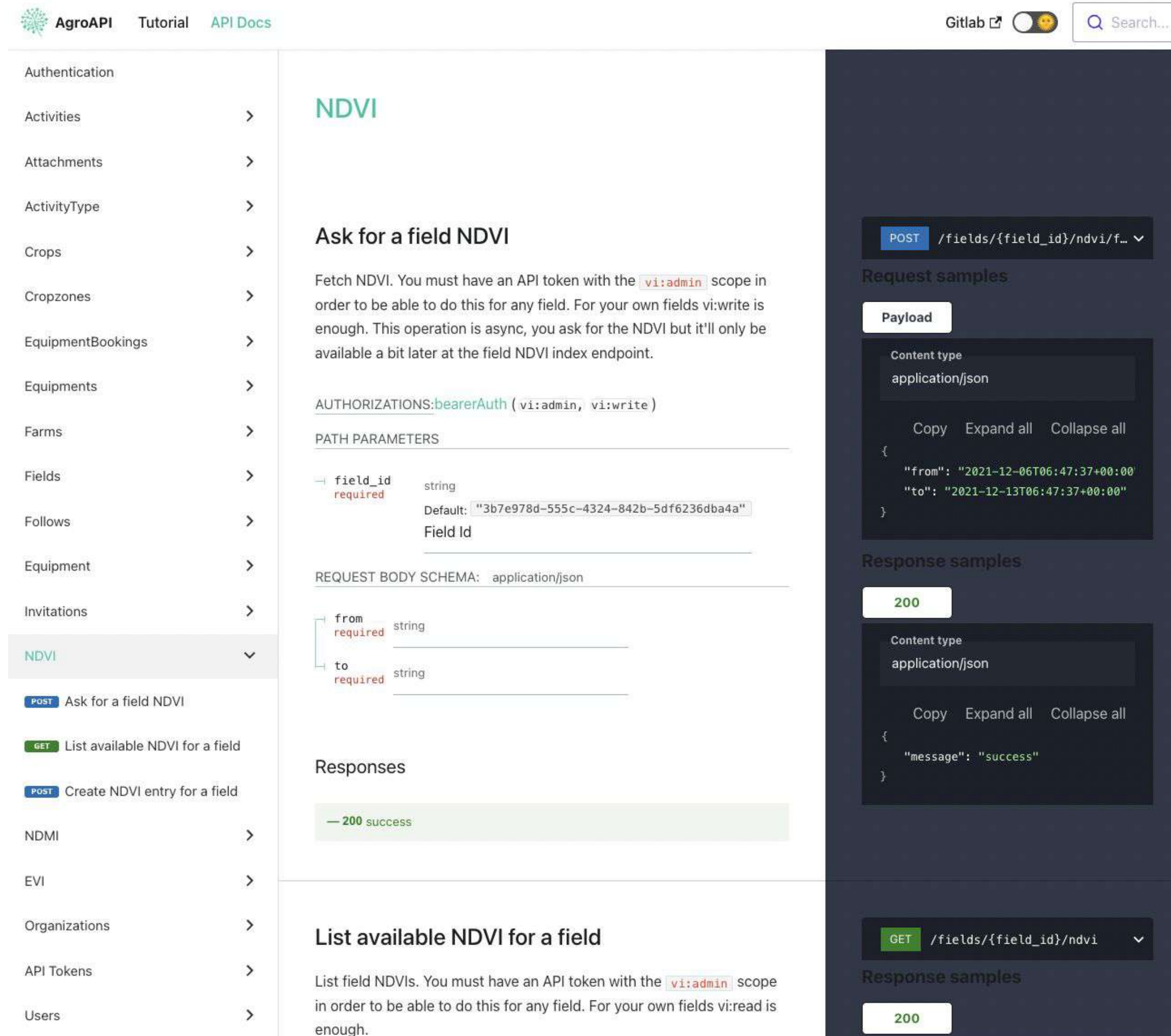


Water Stress Score



Biomass Score

EX: <https://listenfield.gitlab.io/products/farmai/agroapi/api/#tag/NDVI>



The screenshot shows the AgroAPI documentation page for NDVI. The left sidebar contains a navigation menu with categories like Authentication, Activities, Attachments, ActivityType, Crops, Cropzones, EquipmentBookings, Equipments, Farms, Fields, Follows, Equipment, Invitations, NDVI (selected), NDMI, EVI, Organizations, API Tokens, and Users. The main content area is titled 'NDVI' and includes a section 'Ask for a field NDVI' with a description, authorization requirements (bearerAuth with vi:admin, vi:write), path parameters (field_id), and request body schema. Below this is a 'Responses' section showing a 200 success status. A dark-themed sidebar on the right provides a detailed view of the API endpoints, including a POST endpoint for asking for NDVI and a GET endpoint for listing available NDVI, with their respective request and response samples.

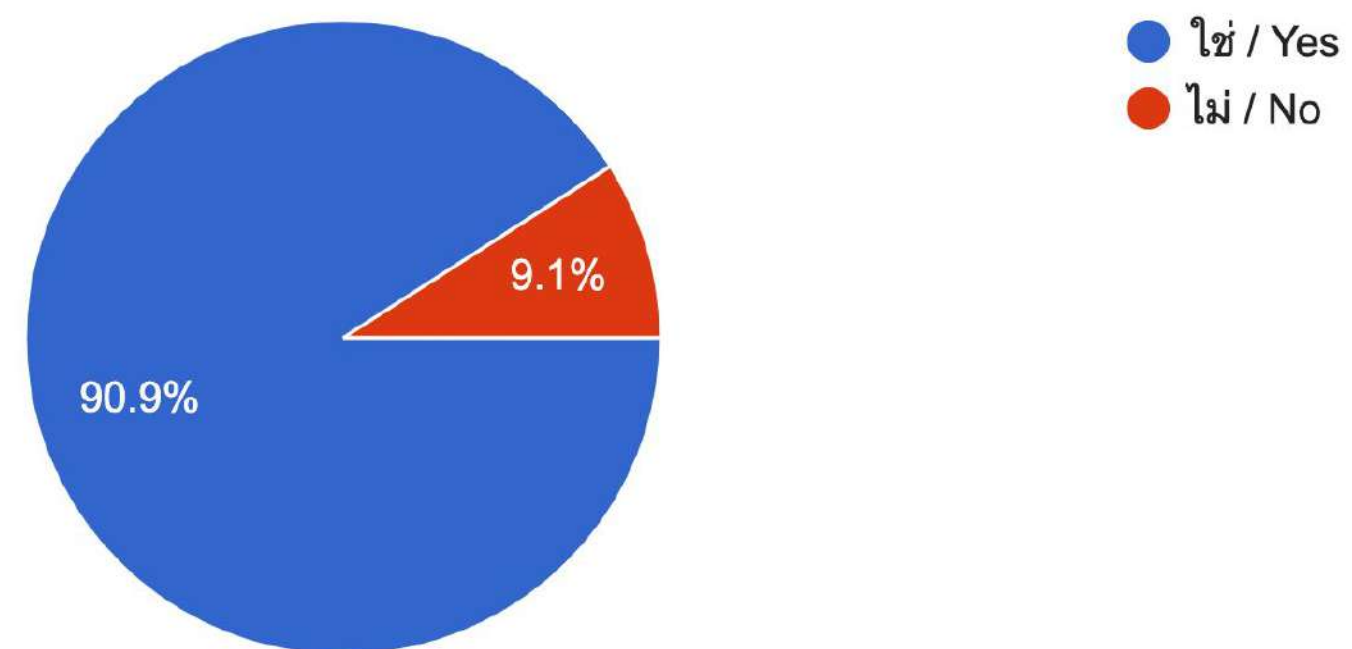
What you can get from our API

- Access field boundary
- Access farmer activities (e.g. fertilizer)
- Access analytics data such as
 - Weekly canopy cover
 - Photosynthesis Index
 - Water Stress Index
 - Biomass Index
- Sensor management
- Soil profile

Result from PoC projects in Thailand

คุณคิดว่าการทำนายวันที่เก็บเกี่ยวมีความสำคัญหรือไม่? / Do you think the smart prediction of the harvesting date is important? If yes, how is it important?

22 responses



90%

of farmers thinks that smart prediction is important for improving their productivity



ListenField is expecting to expand this opportunity to help **farmers** and **agricultural businesses** in Thailand to work together effectively

